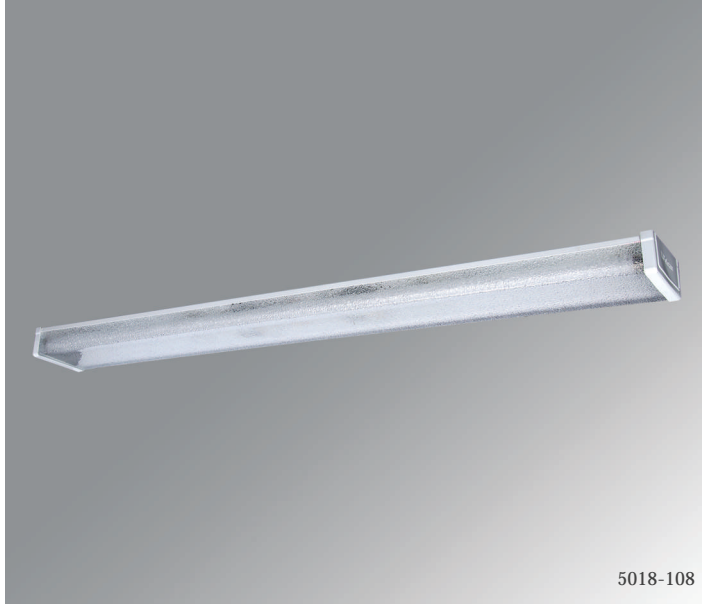


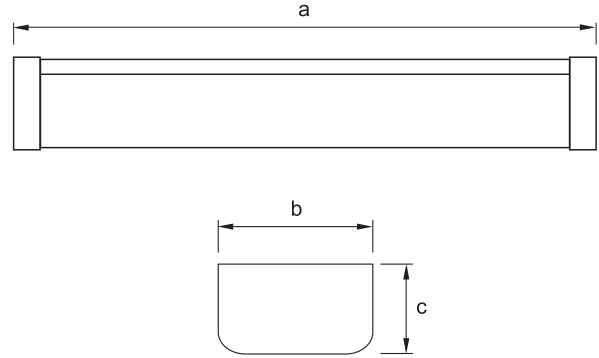


Pleksiglas Armatürler

Plexiglass Luminaires



“PSC” Armatürler (IP40)
“PSC” Luminaires (IP40)



Armatür Özellikleri

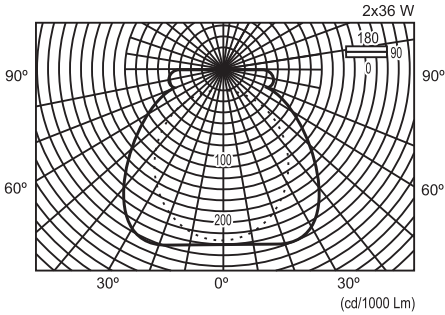
- Gövde : 0,70 mm metal
- Balast : EN 60921-EN 61347-2-8
- Starter : EN 60155
- Cam : Buzlu polimer
- Duy : EN 60400
- Kablo : 1 mm NYA
- Boya : Elektrostatik toz boya

- * Elektronik balast uygulanabilir.
- * Dim edilebilir elektronik balast uygulanabilir.
- * Acil aydınlatma ünitesi uygulanabilir.

Specifications

- Body : 0,70 mm sheet
- Ballast : EN 60921-EN 61347-2-8
- Starter : EN 60155
- Diffuser : Frosted
- Base : EN 60400
- Cable : 1 mm NYA
- Coating : Electrostatic powder coating

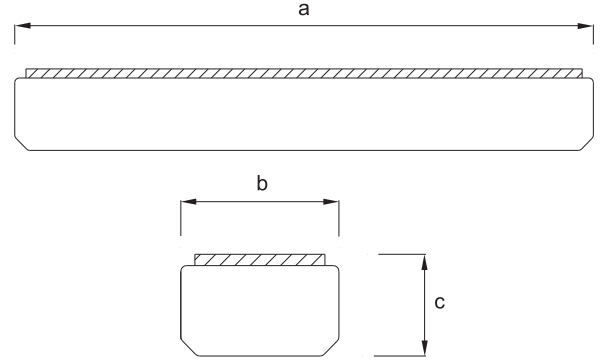
- * Electronic ballast can be applied.
- * Dimmable electronic ballast can be applied.
- * Emergency units can be applied.



Kod No Code No	Tip Type	Lamba Tipi Lamp Type	Güç Power (w)	Işık Akısı Luminous Flux (lm)	Akım Current (A)	Kondansatör Capacitor (µF±10 250 V)	Boyutlar Dimensions (mm)			Ağırlık Weight (Kg)	Hacim Volume (m³)	Duy Base	Koli Adedi Pcs / Pack
							a	b	c				
5019-105	PSC Buzlu	TL-D 18	1x18	1x1300	0,37	4,5	620	70	90	1,30	0,0032	G13	1
5019-106	PSC Buzlu	TL-D 18	2x18	2x1300	0,43	4,5	620	125	63	1,40	0,0056	G13	1
5019-107	PSC Buzlu	TL-D 36	1x36	1x3250	0,43	4,5	1230	70	90	2,20	0,0099	G13	1
5019-108	PSC Buzlu	TL-D 36	2x36	2x3250	0,86	9	1230	125	63	3,30	0,0110	G13	1
5019-111	PSC Opal	TL-D 18	1x18	1x1300	0,37	4,5	620	70	90	1,30	0,0032	G13	1
5019-112	PSC Opal	TL-D 18	2x18	2x1300	0,43	4,5	620	125	63	1,40	0,0056	G13	1
5019-116	PSC Opal	TL-D 36	1x36	1x3250	0,43	4,5	1230	70	90	2,20	0,0099	G13	1
5019-117	PSC Opal	TL-D 36	2x36	2x3250	0,86	9	1230	125	63	3,30	0,0110	G13	1



“T1” Pleksiglas Armatürler (IP40)
“T1” Plexiglass Luminaires (IP40)



Armatür Özellikleri

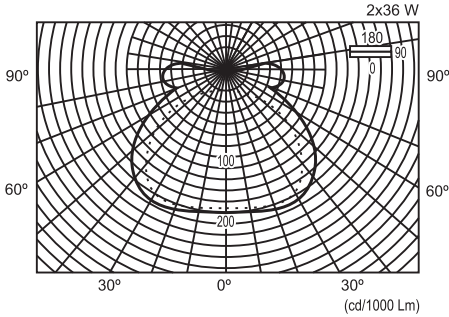
Gövde : 0,70 mm metal
Balast : EN 60921-EN 61347-2-8
Starter : EN 60155
Cam : Opal PMMA
Duy : EN 60400
Kablo : 1 mm NYA
Boya : Elektrostatik toz boya

- * Elektronik balast uygulanabilir.
- * Dim edilebilir elektronik balast uygulanabilir.
- * Acil aydınlatma ünitesi uygulanabilir.

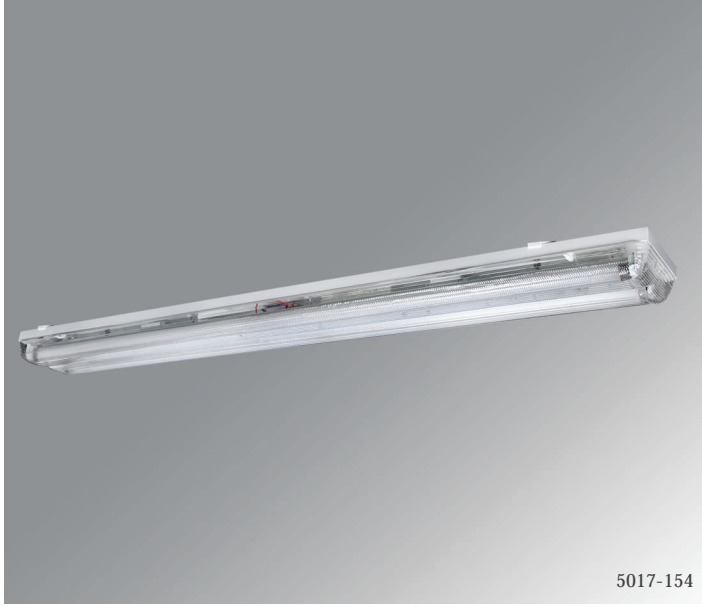
Specifications

Body : 0,70 mm sheet
Ballast : EN 60921-EN 61347-2-8
Starter : EN 60155
Diffuser : Opal PMMA
Base : EN 60400
Cable : 1 mm NYA
Coating : Electrostatic powder coating

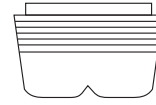
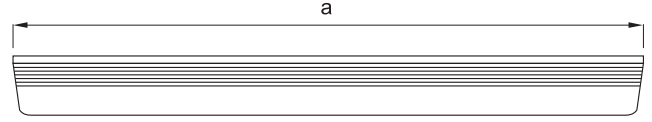
- * Electronic ballast can be applied.
- * Dimmable electronic ballast can be applied.
- * Emergency units can be applied.



Kod No Code No	Tip Type	Lamba Tipi Lamp Type	Güç Power (w)	Işık Akışı Luminous Flux (lm)	Akım Current (A)	Kondansatör Capacitor ($\mu F \pm 10$ 250 V)	Boyutlar Dimensions (mm)			Ağırlık Weight (Kg)	Hacim Volume (m ³)	Duy Base	Koli Adedi Pcs / Pack
							a	b	c				
5016-102	T1 Opal	TL-D 18	1x18	1x1300	0,37	4,5	640x80x90			1,40	0,0065	G13	1
5016-104	T1 Opal	TL-D 18	2x18	2x1300	0,43	4,5	640x140x90			1,70	0,0100	G13	1
5016-110	T1 Opal	TL-D 18	4x18	4x1300	0,86	9	640x640x90			5,50	0,0410	G13	1
5016-113	T1 Opal	TL-D 36	1x36	1x3250	0,43	4,5	1240x80x90			2,20	0,0089	G13	1
5016-115	T1 Opal	TL-D 36	2x36	2x3250	0,86	9	1265x140x90			3,70	0,0163	G13	1
5017-102	T1 Peffaf	TL-D 18	1x18	1x1300	0,37	4,5	640x80x90			1,40	0,0065	G13	1
5017-104	T1 Peffaf	TL-D 18	2x18	2x1300	0,43	4,5	640x140x90			1,70	0,0100	G13	1
5017-110	T1 Peffaf	TL-D 18	4x18	4x1300	0,86	9	640x640x90			5,50	0,0410	G13	1
5017-113	T1 Peffaf	TL-D 36	1x36	1x3250	0,43	4,5	1240x80x90			2,20	0,0089	G13	1
5017-115	T1 Peffaf	TL-D 36	2x36	2x3250	0,86	9	1265x140x90			3,70	0,0163	G13	1



“Okul Tipi” Pleksiglas Armatürler (IP40)
“School Type” Plexiglass Luminaires (IP40)



Armatür Özellikleri

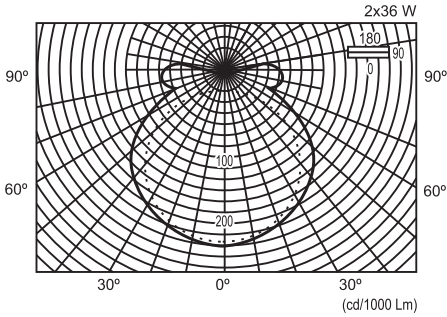
Gövde : 0,70 mm metal
Balast : EN 60921-EN 61347-2-8
Starter : EN 60155
Cam : Opal PMMA/Peffaf PMMA
Duy : EN 60400
Kablo : 1 mm NYA
Boya : Elektrostatik toz boya

- * Elektronik balast uygulanabilir.
- * Dim edilebilir elektronik balast uygulanabilir.
- * Acil aydınlatma ünitesi uygulanabilir.

Specifications

Body : 0,70 mm sheet
Ballast : EN 60921-EN 61347-2-8
Starter : EN 60155
Diffuser : Opal PMMA/Transparent PMMA
Base : EN 60400
Cable : 1 mm NYA
Coating : Electrostatic powder coating

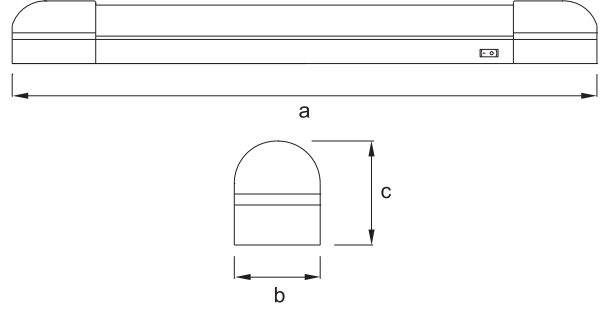
- * Electronic ballast can be applied.
- * Dimmable electronic ballast can be applied.
- * Emergency units can be applied.



Kod No Code No	Tip Type	Lamba Tipi Lamp Type	Güç Power (w)	Işık Akısı Luminous Flux (lm)	Akım Current (A)	Kondansatör Capacitor (µF±10 250 V)	Boyutlar Dimensions (mm)			Ağırlık Weight (Kg)	Hacim Volume (m³)	Duy Base	Koli Adedi Pcs / Pack
							a	b	c				
5017-102	T1 Peffaf	TL-D 18	1x18	1x1300	0,37	4,5	640	80	90	1,40	0,0065	G13	1
5017-202	T1 Peffaf	TL-D 18	2x18	2x1300	0,43	4,5	650	140	65	2,60	0,0095	G13	1
5017-113	T1 Peffaf	TL-D 36	1x36	1x3250	0,43	4,5	1240	80	90	2,20	0,0089	G13	1
5017-154	T1 Peffaf	TL-D 36	2x36	2x3250	0,86	9	1265	140	65	3,70	0,0163	G13	1
5016-102	T1 Opal	TL-D 18	1x18	1x1300	0,37	4,5	640	80	90	1,40	0,0065	G13	1
5016-202	T1 Opal	TL-D 18	2x18	2x1300	0,43	4,5	650	140	65	2,60	0,0095	G13	1
5016-113	T1 Opal	TL-D 36	1x36	1x3250	0,43	4,5	1240	80	90	2,20	0,0089	G13	1
5016-154	T1 Opal	TL-D 36	2x36	2x3250	0,86	9	1265	140	65	3,70	0,0163	G13	1



“Petek” Aplik
“Petek” Applique



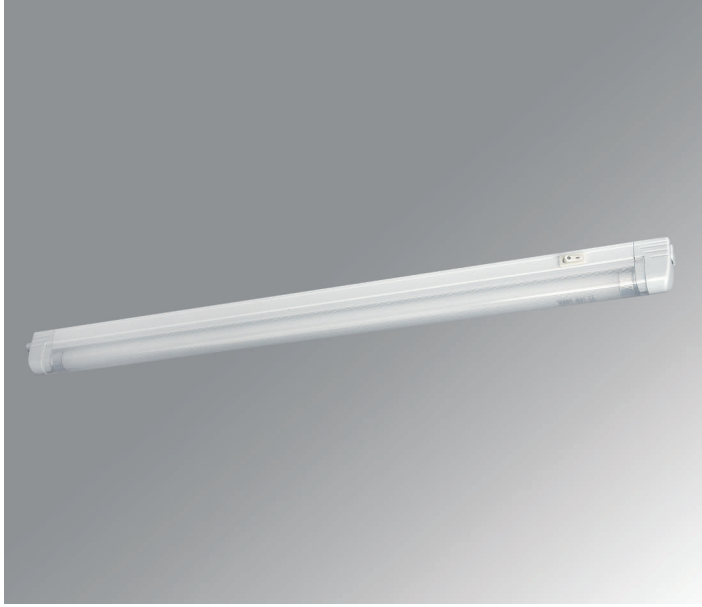
Armatür Özellikleri

Gövde : Alüminyum profil
Balast : EN 60921-EN 61347-2-8
Starter : EN 60155
Cam : Geri dönüştürülebilir polimer
Duy : EN 60400
Kablo : 1 mm NYA
Boya : Elektrostatik toz boya

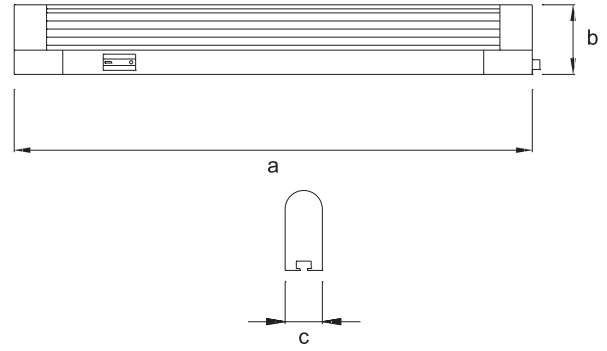
Specifications

Body : Aluminium profile
Ballast : EN 60921-EN 61347-2-8
Starter : EN 60155
Diffuser : Recyclable polymer
Base : EN 60400
Cable : 1 mm NYA
Coating : Electrostatic powder coating

Kod No Code No	Tip Type	Lamba Tipi Lamp Type	Güç Power (w)	Işık Akısı Luminous Flux (lm)	Akım Current (A)	Boyutlar Dimensions (mm)			Ağırlık Weight (Kg)	Hacim Volume (m ³)	Duy Base	Koli Adedi Pcs / Pack
						a	b	c				
5811-207	Petek	TLMini 8	8	300	0,145	395	42	75	7,00	0,0150	G5	10
5811-208	Petek	TL-D 18	18	1300	0,370	690	42	75	14,50	0,0290	G13	10
5811-211	Petek	TL-D 36	36	3250	0,430	1306	42	75	21,00	0,0530	G13	10



“Linea” Aplik
“Linea” Applique



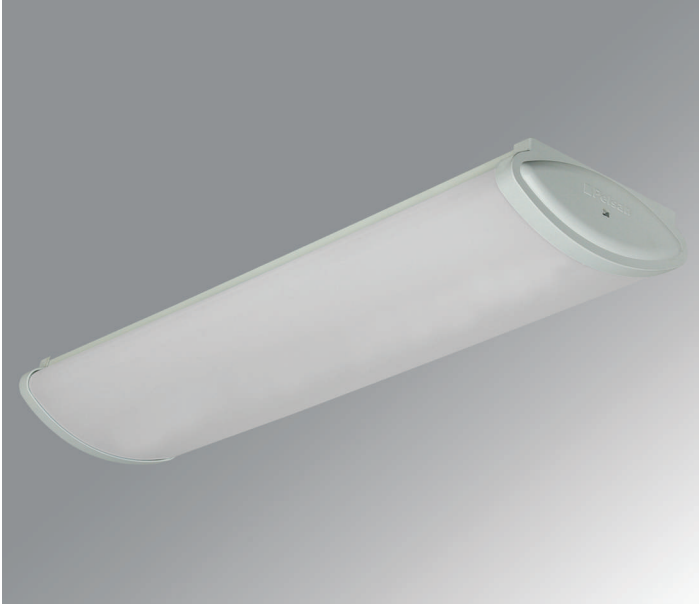
Armatür Özellikleri

Gövde : Polimer
Balast : EN 61347-2-3
Cam : PMMA
Duy : EN 60400
Kablo : TTR

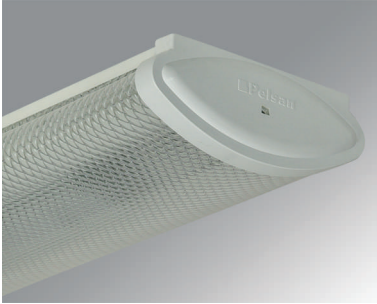
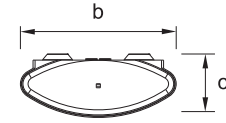
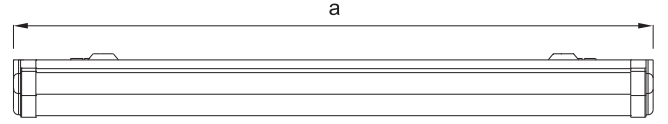
Specifications

Body : Polymer
Ballast : EN 61347-2-3
Diffuser : PMMA
Base : EN 60400
Cable : TTR

Kod No Code No	Tip Type	Lamba Tipi Lamp Type	Güç Power (w)	Işık Akışı Luminous Flux (lm)	Akım Current (A)	Boyutlar Dimensions (mm)			Ağırlık Weight (Kg)	Hacim Volume (m ³)	Duy Base	Koli Adedi Pcs / Pack
						a	b	c				
5951-624	Linea 14	TL5 14	14	1220	0,060	610	42	23	8,00	0,03560	G5	20
5951-625	Linea 28	TL5 28	28	2580	0,160	1235	42	23	17,00	0,0700	G5	20



“Plex” Armatürler
“Plex” Luminaires



Armatür Özellikleri

Gövde : 0,50 mm metal
Balast : EN 60921-EN 61347-2-8-EN 61347-2-3
Starter : EN 60155
Cam : Opal PMMA/Şeffaf PMMA
Duy : EN 60400
Kablo : 1 mm NYA
Boya : Elektrostatik toz boya

- * Elektronik balast uygulanabilir.
- * Dim edilebilir elektronik balast uygulanabilir.
- * Acil aydınlatma ünitesi uygulanabilir.
- * Opsiyonel olarak şeffaf ve lensli camı sunulmaktadır.

Specifications

Body : 0,50 mm sheet
Ballast : EN 60921-EN 61347-2-8-EN 61347-2-3
Starter : EN 60155
Diffuser : Opal PMMA/Transparent PMMA
Base : EN 60400
Cable : 1 mm NYA
Coating : Electrostatic powder coating

- * Electronic ballast can be applied.
- * Dimmable electronic ballast can be applied.
- * Emergency units can be applied.
- * Transparent and prismatic lens diffuser option.

Kod No Code No	Tip Type	Lamba Tipi Lamp Type	Güç Power (w)	Işık Akışı Luminous Flux (lm)	Akım Current (A)	Kondansatör Capacitor (µF±10 250 V)	Boyutlar Dimensions (mm)			Ağırlık Weight (Kg)	Hacim Volume (m ³)	Duy Base	Koli Adedi Pcs / Pack
							a	b	c				
5019-521	Plex Opal	TL-D 18	2x18	2x1300	0,43	4,5	620	155	60	1,65	0,00717	G13	1
5019-522	Plex Opal	TL-D 36	2x36	2x3250	0,86	9	1230	155	60	2,70	0,01420	G13	1
5019-525	Plex Opal	TL5 14	2x14	2x1220	0,16		580	155	60	1,20	0,00681	G5	1
5019-526	Plex Opal	TL5 28	2x28	2x2580	0,28		1190	155	60	2,00	0,01374	G5	1

