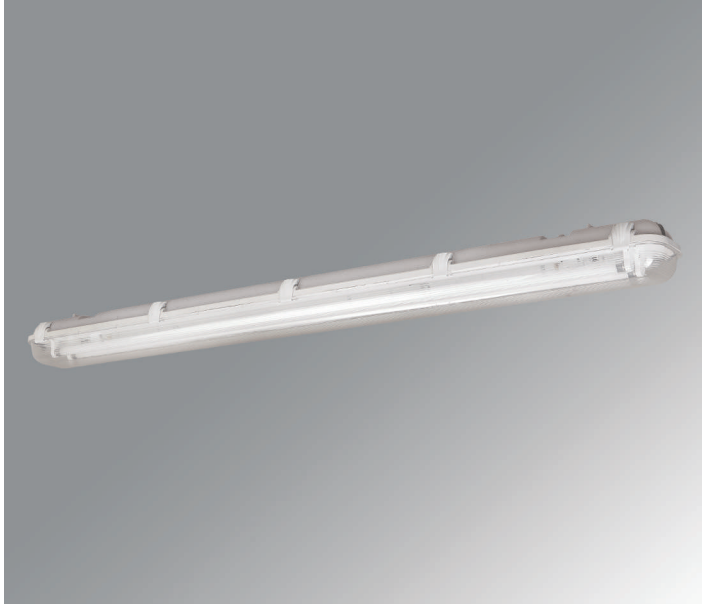


01

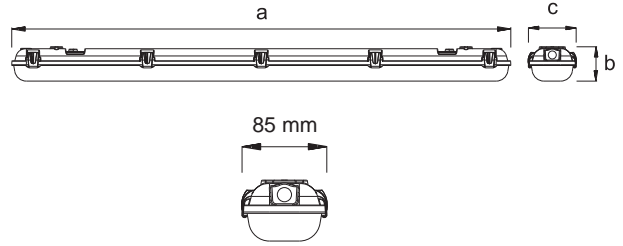


Etanj Armatürler

Waterproof Luminaires



“Largo” Etanj T5 Armatürler (IP65)
“Largo” Waterproof T5 Luminaires (IP65)



Armatür Özellikleri

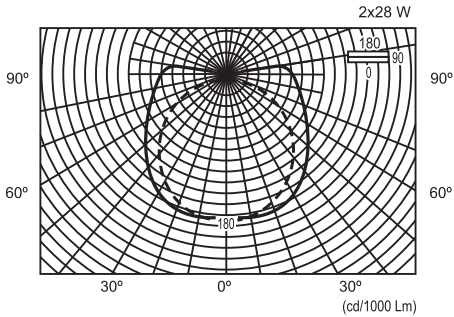
- Gövde : Cam elyaf katkılı fibreglas
- Balast : EN 61347-2-3
- Duy : EN 60400
- Kablo : 1 mm NYA
- Cam : Enjeksiyon PMMA
- Reflektör: Elektrostatik toz boyalı metal
- Conta : EPDM
- Klips : Polimer

- * Polikarbon cam opsiyonel olarak sunulmaktadır.
- * Acil aydınlatma ünitesi uygulanabilir.

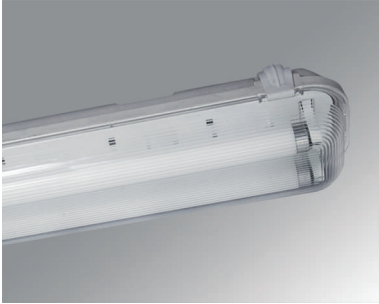
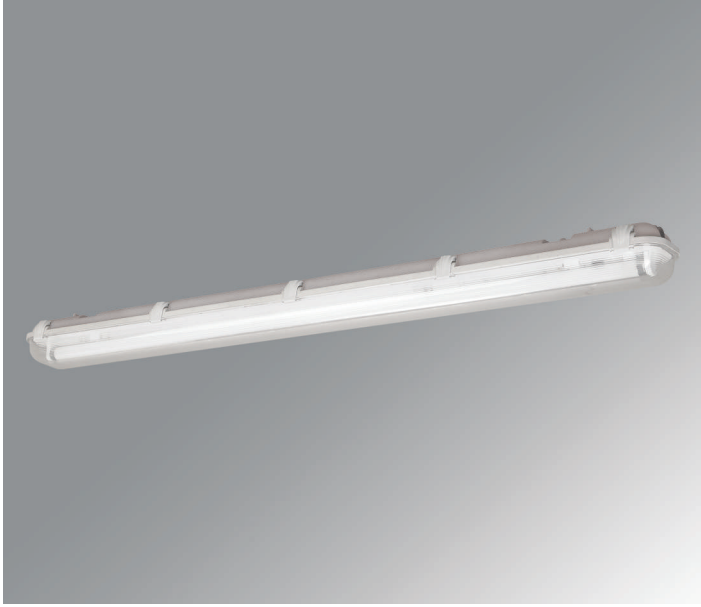
Specifications

- Body : GRP
- Ballast : EN 61347-2-3
- Base : EN 60400
- Cable : 1 mm NYA
- Diffuser : Injection PMMA
- Reflector : Electrostatic powder coated sheet
- Gasket : EPDM
- Clips : Polymer

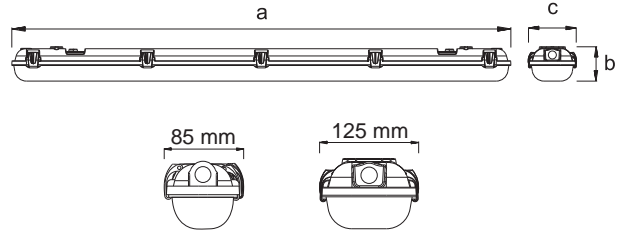
- * PC diffuser option
- * Emergency units can be applied.



Kod No Code No	Tip Type	Lamba Tipi Lamp Type	Güç Power (w)	Işık Akısı Luminous Flux (lm)	Akım Current (A)	Kondansatör Capacitor (µF±10 250 V)	Boyutlar Dimensions (mm)			Ağırlık Weight (Kg)	Hacim Volume (m³)	Duy Base	Koli Adedi Pcs / Pack
							a	b	c				
5021-712	Largo	TL5 14	1x14	1x1220	0,08		663	85	85	11,00	0,04140	G5	6
5021-714	Largo	TL5 14	2x14	2x1220	0,16		663	85	85	11,50	0,04140	G5	6
5021-720	Largo	TL5 28	1x28	1x2580	0,15		1273	85	85	17,00	0,07740	G5	6
5021-722	Largo	TL5 28	2x28	2x2580	0,30		1273	85	85	17,50	0,07740	G5	6
5021-728	Largo	TL5 35	1x35	1x3290	0,17		1573	85	85	21,50	0,09600	G5	6
5021-730	Largo	TL5 35	2x35	2x3290	0,34		1573	85	85	21,50	0,09600	G5	6



“Largo” Etanj T8 Armatürler (IP65) “Largo” Waterproof T8 Luminaires (IP65)



Armatür Özellikleri

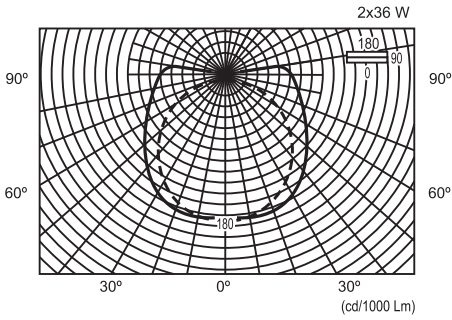
Gövde : Cam elyaf katkıly fiberglass
Balast : EN 60921-EN 61347-2-8
Starter : EN 60155
Duy : EN 60400
Kablo : 1 mm NYA
Cam : Enjeksiyon PMMA
Reflektör : Elektostatik toz boyaly metal
Conta : EPDM
Klips : Polimer

- * Polikarbon cam opsiyonel olarak sunulmaktadır.
- * Elektronik balast uygulanabilir.
- * Acil aydınlatma ünitesi uygulanabilir.

Specifications

Body : GRP
Ballast : EN 60921-EN 61347-2-8
Starter : EN 60155
Base : EN 60400
Cable : 1 mm NYA
Diffuser : Injection PMMA
Reflector : Electrostatic powder coated sheet
Gasket : EPDM
Clips : Polymer

- * PC diffuser option
- * Electronic ballast can be applied.
- * Emergency units can be applied.

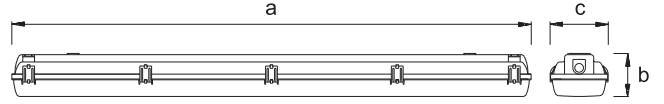


Kod No Code No	Tip Type	Lamba Tipi Lamp Type	Güç Power (w)	Işık Akışı Luminous Flux (lm)	Akım Current (A)	Kondansatör Capacitor (µF±10 250 V)	Boyutlar Dimensions (mm)			Ağırlık Weight (Kg)	Hacim Volume (m³)	Duy Base	Koli Adedi Psc Pack
							a	b	c				
5021-740	Largo	TL-D 18	1x18	1x1300	0,37	4,5	663	85	85	11,50	0,04140	G13	6
5021-824	Largo	TL-D 18	2x18	2x1300	0,43	4,5	670	85	120	13,20	0,05304	G13	6
5021-742	Largo	TL-D 36	1x36	1x3250	0,43	4,5	1273	85	85	17,50	0,07740	G13	6
5021-828	Largo	TL-D 36	2x36	2x3250	0,86	9	1280	85	120	21,50	0,10062	G13	6
5021-744	Largo	TL-D 58	1x58	1x5000	0,67	7	1573	85	85	24,00	0,09600	G13	6
5021-832	Largo	TL-D 58	2x58	2x5000	0,34	14	1580	85	120	31,00	0,12402	G13	6

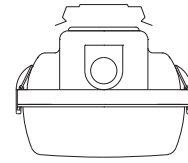




“Aqua” Etanj T5 Armatürler (IP65)
“Aqua” Waterproof T5 Luminaires (IP65)



Askı montaj aparatı / Ceiling Fitting Device



Armatür Özellikleri

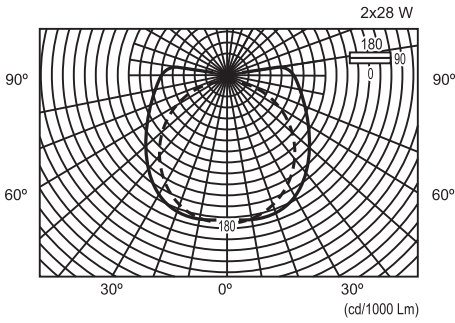
- Gövde : Enjeksiyon polikarbon
- Balast : EN 61347-2-3
- Duy : EN 60400
- Kablo : 1 mm NYA
- Cam : Enjeksiyon polikarbon
- Reflektör : Elektrostatik toz boyalı metal
- Boya : Elektrostatik toz boya
- Conta : EPDM
- Klips : Paslanmaz Çelik

* Acil aydınlatma ünitesi uygulanabilir.

Specifications

- Body : Injection polycarbonate
- Ballast : EN 61347-2-3
- Base : EN 60400
- Cable : 1 mm NYA
- Diffuser : Injection polycarbonate
- Reflector : Electrostatic powder coated
- Gasket : EPDM
- Clips : Stainless steel

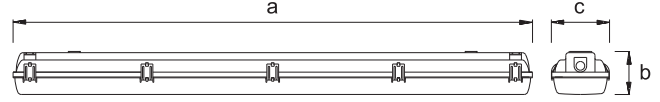
* Emergency units can be applied.



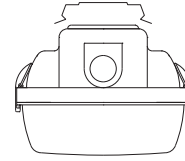
Kod No Code No	Tip Type	Lamba Tipi Lamp Type	Güç Power (w)	Işık Akışı Luminous Flux (lm)	Akım Current (A)	Kondansatör Capacitor (µF±10 250 V)	Boyutlar Dimensions (mm)			Ağırlık Weight (Kg)	Hacim Volume (m³)	Duy Base	Koli Adedi Pcs / Pack
							a	b	c				
5021-451	Aqua	TL5 14	1x14	1x1220	0,08		670x110x140			9,00	0,0738	G5	6
5021-452	Aqua	TL5 14	2x14	2x1220	0,16		670x110x140			9,60	0,0738	G5	6
5021-455	Aqua	TL5 28	1x28	1x2580	0,15		1280x110x140			15,60	0,1320	G5	6
5021-456	Aqua	TL5 28	2x28	2x2580	0,30		1280x110x140			16,20	0,1320	G5	6
5021-458	Aqua	TL5 35	1x35	1x3290	0,17		1570x144x100			8,00	0,0660	G5	6
5021-459	Aqua	TL5 35	2x35	2x3290	0,34		1570x144x150			9,20	0,0948	G5	4



“Aqua” Etanj T8 Armatürler (IP65)
“Aqua” Waterproof T8 Luminaires (IP65)



Askı montaj aparatı / Ceiling Fitting device



Armatür Özellikleri

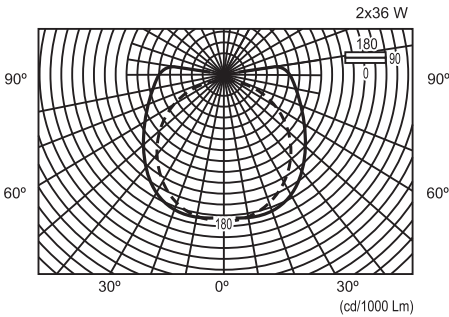
- Gövde : Enjeksiyon polikarbon
- Balast : EN 60921-EN 61347-2-8
- Starter : EN 60155
- Duy : EN 60400
- Kablo : 1 mm NYA
- Cam : Enjeksiyon polikarbon
- Reflektör : Elektrostatik toz boyalı metal
- Conta : EPDM
- Klips : Paslanmaz Çelik

- * Elektronik balast uygulanabilir.
- * Acil aydınlatma ünitesi uygulanabilir.

Specifications

- Body : Injection polycarbonate
- Ballast : EN 60921-EN 61347-2-8
- Starter : EN 60155
- Base : EN 60400
- Cable : 1 mm NYA
- Diffuser : Injection polycarbonate
- Reflector : Electrostatic powder coated sheet
- Gasket : EPDM
- Clips : Stainless steel

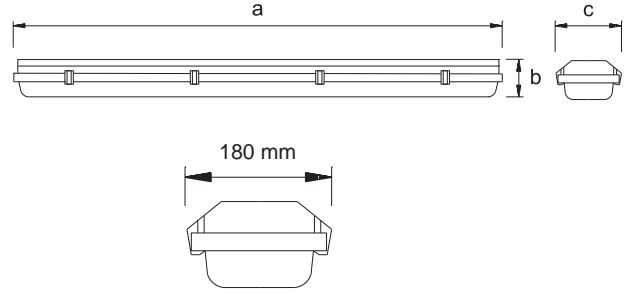
- * Electronic ballast can be applied.
- * Emergency units can be applied.



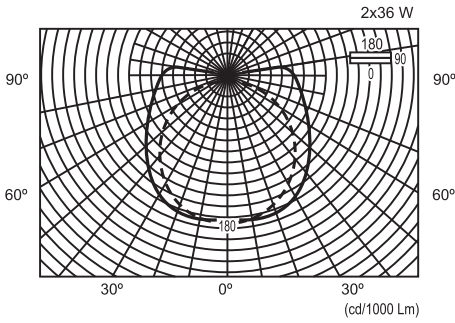
Kod No Code No	Tip Type	Lamba Tipi Lamp Type	Güç Power (w)	Işık Akısı Luminous Flux (lm)	Akım Current (A)	Kondansatör Capacitor (µF±10 250 V)	Boyutlar Dimensions (mm)			Ağırlık Weight (Kg)	Hacim Volume (m³)	Duy Base	Koli Adedi Pcs / Pack
							a	b	c				
5021-501	Aqua	TL-D 18	1x18	1x1300	0,37	4,5	670	110	140	11,40	0,0738	G13	6
5021-502	Aqua	TL-D 18	2x18	2x1300	0,43	4,5	670	110	140	12,00	0,0738	G13	6
5021-503	Aqua	TL-D 36	1x36	1x3250	0,43	4,5	1280	110	140	18,00	0,1320	G13	6
5021-504	Aqua	TL-D 36	2x36	2x3250	0,86	9	1280	110	140	22,20	0,1320	G13	6
5021-505	Aqua	TL-D 58	1x58	1x5000	0,67	7	1570	144	100	16,50	0,0660	G13	6
5021-506	Aqua	TL-D 58	2x58	2x5000	1,34	14	1570	144	150	16,40	0,0948	G13	4



“Fiberglas” Geniş Etanj Armatürler “Fiberglass” Wide Type Waterproof Luminaires



5022-210-211-212



Armatür Özellikleri

Gövde : Cam elyaf katkılı fiberglas
Balast : EN 60921-EN 61347-2-8
Starter : EN 60155
Duy : EN 60400
Kablo : 1 mm NYA
Cam : PMMA
Reflektör : Elektrostatik toz boyalı metal
Conta : EPDM
Klips : Paslanmaz çelik

- * Polikarbon cam opsiyonel olarak sunulmaktadır.
- * Elektronik balast uygulanabilir.
- * Acil aydınlatma ünitesi uygulanabilir.

Specifications

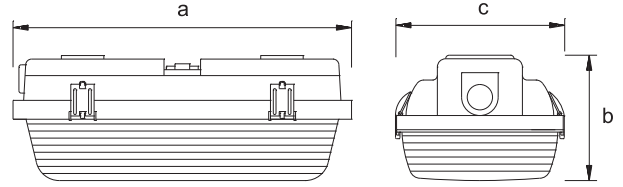
Body : GRP
Ballast : EN 60921-EN 61347-2-8
Starter : EN 60155
Base : EN 60400
Cable : 1 mm NYA
Diffuser : Injection PMMA
Reflector : Electrostatic powder coated sheet
Gasket : EPDM
Clips : Stainless steel

- * PC diffuser option
- * Electronic ballast can be applied.
- * Emergency units can be applied.

Kod No Code No	Tip Type	Lamba Tipi Lamp Type	Güç Power (w)	Işık Akışı Luminous Flux (lm)	Akım Current (A)	Kondansatör Capacitor (µF±10 250 V)	Boyutlar Dimensions (mm)			Ağırlık Weight (Kg)	Hacim Volume (m³)	Duy Base	Koli Adedi Pcs / Pack
							a	b	c				
5021-142	Geniş fiberglas	TL-D 18	2x18	2x1300	0,43	4,5	670	135	180	12,80	0,0700	G13	4
5021-144	Geniş fiberglas	TL-D 18	3x18	3x1300	1,11	9	670	135	180	16,40	0,0700	G13	4
5021-146	Geniş fiberglas	TL-D 36	2x36	2x3250	0,86	9,0	1300	115	180	19,50	0,1176	G13	4
5021-148	Geniş fiberglas	TL-D 36	3x36	3x3250	1,29	13,50	1300	115	180	21,50	0,1176	G13	4
5022-210	Gemi tipi fiberglas	TL-D 18	1x18	1x1300	0,37	4,5	670	135	180	12,80	0,1176	G13	4
5022-211	Gemi tipi fiberglas	TL-D 18	2x18	2x1300	0,74	9	670	135	180	14,80	0,0700	G13	4
5022-212	Gemi tipi fiberglas	TL-D 18	3x18	3x1300	1,11	13,5	670	135	180	16,40	0,0700	G13	4



“Antigron” Armatürler (IP 65)
“Antigron” Luminaires (IP 65)



Armatür Özellikleri

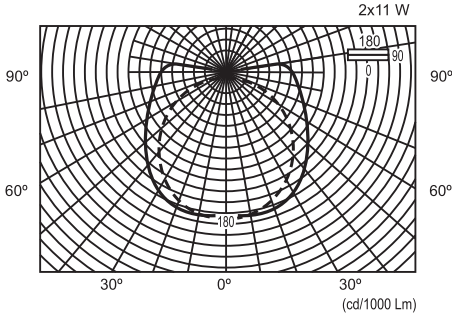
- Gövde : Cam elyaf katkılı fiberglas
- Balast : EN 60921-EN 61347-2-8
- Duy : EN 60400
- Kablo : 1 mm NYA
- Cam : PMMA
- Reflektör : Elektrostatik toz boyalı metal
- Conta : EPDM
- Klips : Paslanmaz çelik

- * Polikarbon cam opsiyonel olarak sunulmaktadır.
- * Elektronik balast uygulanabilir.
- * Acil aydınlatma ünitesi uygulanabilir.

Specifications

- Body : GRP
- Ballast : EN 60921-EN 61347-2-8
- Base : EN 60400
- Cable : 1 mm NYA
- Diffuser : Injection PMMA
- Reflector : Electrostatic powder coated sheet
- Gasket : EPDM
- Clips : Stainless steel

- * PC diffuser option.
- * Electronic ballast can be applied.
- * Emergency units can be applied.



Kod No Code No	Tip Type	Lamba Tipi Lamp Type	Güç Power (w)	Işık Akısı Luminous Flux (lm)	Akım Current (A)	Kondansatör Capacitor (µF±10 250 V)	Boyutlar Dimensions (mm)			Ağırlık Weight (Kg)	Hacim Volume (m³)	Duy Base	Koli Adedi Pcs / Pack
							a	b	c				
5412-121	Antigron	PL-E 15	1x15	1x900			290	100	140	7,00	0,0410	G23	10
5412-125	Antigron	PL-E 15	2x15	2x900			290	100	140	8,00	0,0410	G23	10
5412-110	Antigron	PL-C 18	1x18	1x1200	0,220	2,2	290	100	140	11,00	0,0410	G24	10
5412-108	Antigron	PL-C 18	2x18	2x1200	0,440	4,4	290	100	140	13,60	0,0410	G24	10
5412-124	Antigron	PL-L 18	1x18	1x1200	0,370	4,5	290	100	140	13,60	0,0410	2G11	10
5412-122	Antigron	PL-L 18	2x18	2x1200	0,430	4,5	290	100	140	13,60	0,0410	2G11	10